



Bainbridge Island
Japanese American Exclusion Memorial
A National Park Service Historic Site

REQUEST FOR ARTWORK PROPOSALS





ACCEPTING ARTWORK PROPOSALS

Call Open: January 1-February 15, 2021

Submission deadline: February 15, 2021

Award Notifications: March 1, 2021

Project Completion: June, 2021

Questions/contact:

Val Tollefson, info@bijaema.org 206-660-6350

THE PROJECT

The Bainbridge Island Japanese American Exclusion Memorial Association (BIJAEMA) is building a Departure Deck as a component of the Memorial. The Departure Deck is intended to evoke the feelings that must have been shared by those Bainbridge Islanders forced from their homes into concentration camps in 1942. Artistic or interpretive elements chosen from responses to this Request will serve that purpose. BIJAEMA has established a budget in the range of \$100,000-\$120,000 for this portion of the project.

ORGANIZERS

BIJAEMA has organized a planning committee, which includes representatives from BIJAEMA, the Bainbridge Island Japanese American Community (BIJAC), the Bainbridge Island Historical Museum and the National Park Service. This committee will evaluate proposals and make recommendations to BIJAEMA.

Bainbridge Island Japanese American Community (BIJAC.org)

National Park Service ([Bainbridge Island Japanese American Exclusion Memorial - Minidoka National Historic Site \(U.S. National Park Service\) \(nps.gov\)](http://BainbridgeIslandJapaneseAmericanExclusionMemorial-MinidokaNationalHistoricSite(U.S.NationalParkService).nps.gov))

Bainbridge Island Japanese American Exclusion Memorial Assoc. (BIJAEMA.org)

Bainbridge Island Historical Museum (BainbridgeHistory.org)

OVERVIEW

The Departure Deck structure is one of the crucial pieces on this Exclusion Memorial site. The deck is located at the exact location of the historic Eagledale Ferry Dock. This structure will be an evocative and poignant interpretation of the first forced removal and exclusion of Japanese Americans during World War II. The site already contains narrative elements providing historical context that can be viewed as visitors approach the departure deck.

The goal of the site is to honor the memory of the people affected, and to stand as a constant reminder that we must “Let it not happen again.”

ARTIST CRITERIA FOR SUBMISSION

Submitting artists must:

- Be over 18-years of age; residing in the northwest
- Submit a statement, along with your concepts, addressing your connection to human rights advocacy and any relationship to this historical event or goals
- Reflect the emotions, atmosphere and somber nature of this site
- Adhere to the specified timeline
- Proposal must include design, fabrication, and installation costs for all proposed departure deck art/Interpretive elements
- Submit descriptions, renderings, artist's statement by February 15, 2021 to:

BIJAEMA, info@bijaema.org 206-660-6350

SUBMISSION CONSIDERATIONS

Please keep the following in mind when considering a submission:

- There are several different opportunities for placement of art pieces/narratives
- This may be a collaborative effort
- The installation is outdoors, subject to rain, ice, snow, high winds
- The space will be visited by groups, which could be 20-30 at a time ranging in age from elementary to senior citizens
- Visitors come to the site from all over the world and many have no previous knowledge of this historical event, and attend spontaneously
- Installation must comply with ADA and safety requirements
- There are three key opportunities for art elements:
 - Entrance to the Departure Deck
 - Placement of items along the walkway of the deck itself
 - Treatment at the terminal end of the deck

SUBMISSION REQUIREMENTS

- ◆ Artist statement
- ◆ Content description(s) that illustrate proposed art, placement, construction, scale and storytelling value
- ◆ Concept rendering(s)
- ◆ Reference photos and/or descriptions of prior relevant work

PLANNING COMMITTEE GUIDANCE

To inform prospective artists, the planning committee has developed a general description of the Departure Deck, emotions of that day, and initial ideas about three areas for art and interpretive placement. Submissions outside of the identified ideas described will be considered, if they add impact and meaning and the budget allows. Please also review the supplemental memorial, departure deck, and site information included in this package.

General description of the purpose of the departure deck, and proposed art:

“Let **it** not happen again” (Nidoto nai yoni) What is **it**?

- ◆ Lack of freedom
- ◆ Injustice
- ◆ Prejudice
- ◆ Indifference
- ◆ Fear and panic
- ◆ Racism

What the deck meant to the people walking on it on March 30, 1942

- ◆ Passage
- ◆ Beginning of the journey/departure
- ◆ Stepping off point
- ◆ Final day on Bainbridge Island for unknown period of time
- ◆ Captured – not fair
- ◆ “Cannot be helped” attitude of the Japanese Americans
- ◆ Forced separation-no known return date
- ◆ Duty – people left peacefully
- ◆ Destination and return date was unknown
- ◆ This deck, on this site, represents the one thing that was actually there on March 30, 1942

PLANNING COMMITTEE GUIDANCE-Continued

Identified specific components

There are three areas of art/interpretive placement (reference historical photos, attached). Submissions outside of the identified specific components will be considered if they add impact and meaning, and budget allows.

Entrance to the deck

- ◆ An overhead structure to define the space
- ◆ There will be a metal surface to create a texture and auditory transition from walking on the existing gravel walkway to the Departure Deck wood entrance
- ◆ Sculptural figures to represent an intimidating armed military presence

Objects on the deck itself

- ◆ Suitcase(s)
- ◆ Toy tractor
- ◆ Tags with the human figure (each person and even babies had a tag attached to identify)
- ◆ Executive Order 9066

Terminal end of the deck

- ◆ Want to discourage the desire/opportunity for a marina “selfie”
- ◆ Interpretive art wall/railing at deck end, possibly glass, or other material. Must allow view beyond and meet IBC railing codes.

OVERVIEW OF THE MEMORIAL SITE

The Bainbridge Island Japanese American community was one of the first in the country to be imprisoned by the US military; 227 Japanese Americans were ordered to leave the island with six days' notice. They departed by ferry on March 30, 1942. Most were initially sent to Manzanar, CA, though most were later transferred to Minidoka, Idaho. The local newspaper, The Bainbridge Review spoke out against the illegal act and continued to publish correspondence from Manzanar and Minidoka. A Seattle Post-Intelligencer photograph of Bainbridge Island resident Fumiko Hayashida and her 13-month-old daughter preparing to board the ferry that day became famous as a symbol of the Japanese American experience of internment during WWII.

About 150 Japanese American Islanders returned after the end of World War II. By 2011, about 90 survivors remained, of whom 20 still live on the Island. The oldest survivor resident of Bainbridge Island passed away in August, 2020 at the age of 100.

The existing memorial is an outdoor cedar "story wall" with the names of all 276 Japanese and Japanese Americans resident on the Island at the time.

The wall was designed by Johnpaul Jones, a Seattle architect and Bainbridge Island resident. Johnpaul is the designer of many well-known cultural facilities throughout the United States, including the Museum of the American Indian in Washington, D.C.; Johnpaul's sensibility, informed by his Native American heritage, has brought this Memorial to life for its many visitors. The grounds of the Memorial has natural landscaping, native species including sword fern, mahonia, salal, and shore pine.

Northwest artist Steve Gardner created friezes that were placed on the wall, depicting the history of Japanese Americans on Bainbridge Island before, during and after World War II. The memorial was opened to the public on July 30, 2011.

ABOUT BAINBRIDGE ISLAND JAPANESE AMERICAN EXCLUSION MEMORIAL ASSOCIATION (BIJAEMA)

The Bainbridge Island Japanese American Exclusion Memorial Association (BIJAEMA) is a nonprofit 501(c)(3) organization formed to support the development and maintenance of the Memorial.

The Bainbridge Island Japanese American Exclusion Memorial Association Mission statement:

- It will oversee a permanent memorial at the site from which the Japanese and Japanese Americans of Bainbridge Island were forcibly excluded under Executive Order 9066 and Civilian Exclusion Order No. 1 during World War II.
- It will honor the exiled Bainbridge Islanders of Japanese descent and their friends and neighbors who stood by them and welcomed them home by making the Memorial a place both of healing and of learning, where the human rights lessons of the illegal incarceration during WWII can be shared widely, and the foundational idea of Nidoto Nai Yoni, “Let It Not Happen Again”, can be made perpetually relevant to future generations.
- It will lend its voice to the public discussion whenever, wherever and however human rights, including without limitation rights guaranteed by the Constitution of the United States, are put in jeopardy by people, regimes or policy.



Exclusion Departure Deck begins construction at the Bainbridge Island Japanese American Exclusion Memorial

Built at the site of the historic Eagledale Ferry Dock, the Exclusion Departure Deck at the Bainbridge Island Japanese American Exclusion Memorial (BIJAEM) will be an evocative and poignant addition to this memorial of one of the first forced removal and exclusion of 120,000 Japanese Americans during WWII.

The 45-foot cantilevered deck at the end of the existing 276-foot Memorial Wall walk, estimated to take several weeks to complete, is currently under construction.

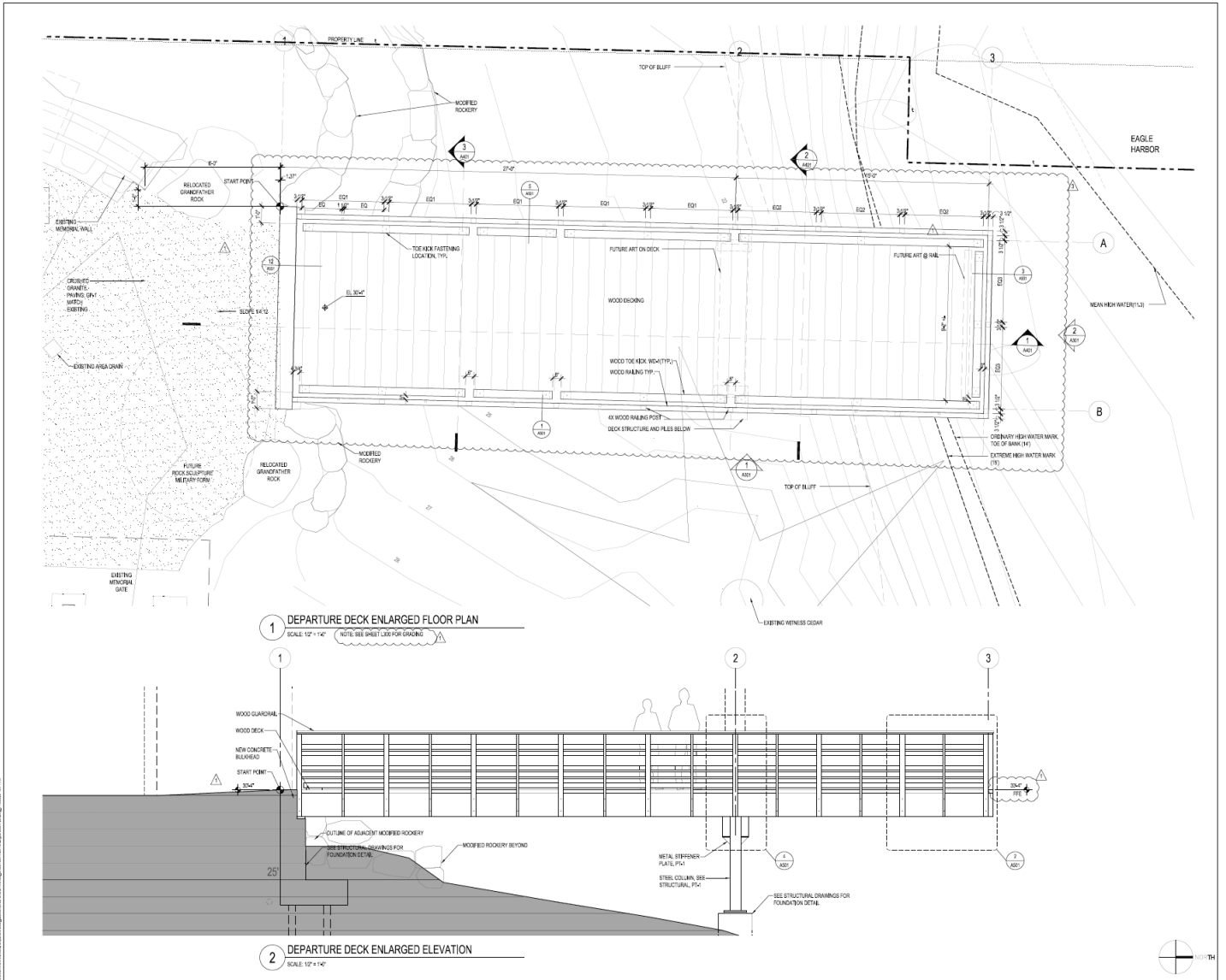
“Once people have walked in the footsteps of history at the Memorial Wall, tracing the steps of the first Japanese Americans in the nation to be forcibly removed in WWII, the Exclusion Departure Deck will complete their journey of discovery where our friends and neighbors left the Island, facing an unknown future and fate,” said Val Tollefson, president of the BIJAEM Association.

The designers of the Exclusion Departure Deck, the third phase construction at the memorial site—are now designing the final phase adding a Visitors Center, intimate outdoor amphitheater, ADA accessible restrooms and paved plaza on the upper site.

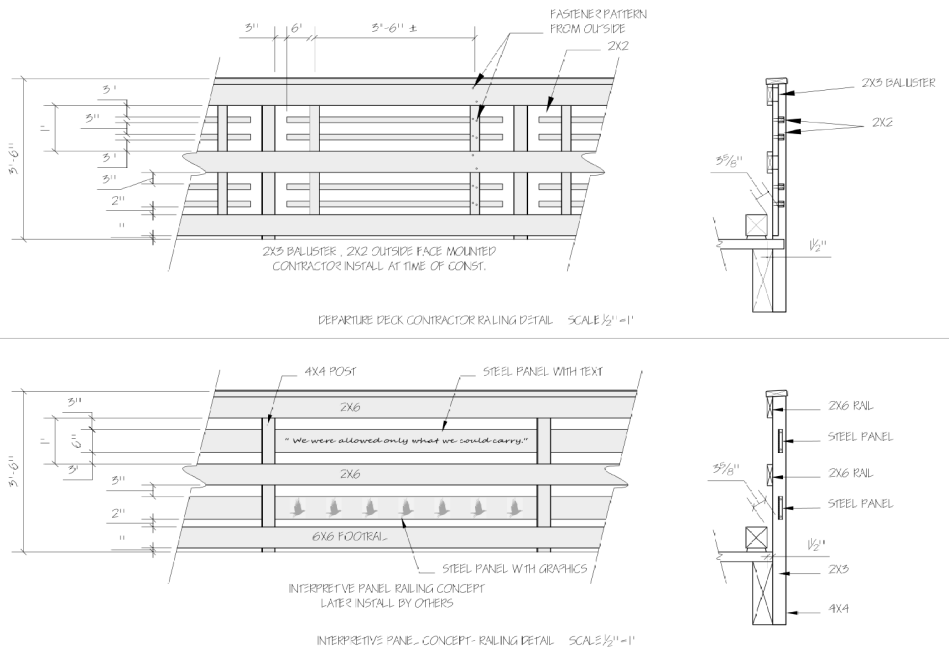
Clark Construction L.L.C. of Bainbridge Island was awarded the Exclusion Departure Deck Project, and funding for the project is made possible by a \$187,668.00 National Park Service

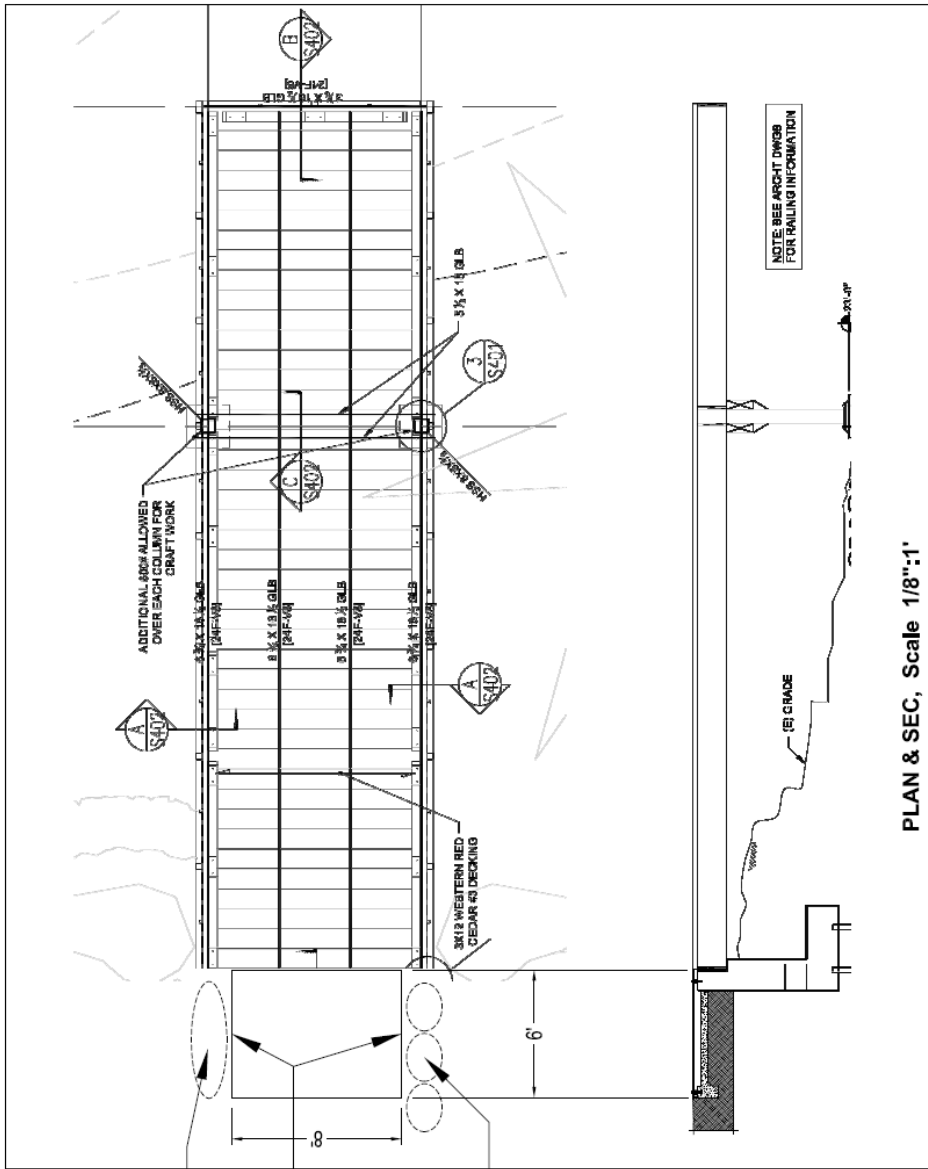
Historical references <https://bijac.org/history/exclusion-and-internment/evacuation/>





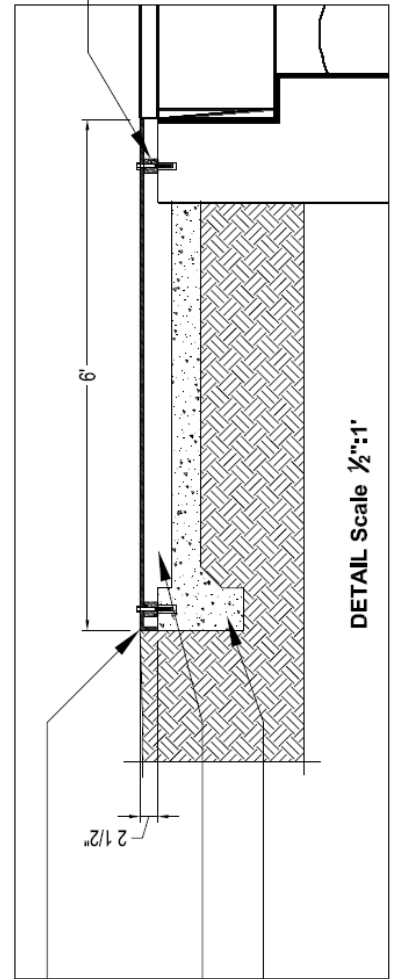
Drawings not to scale





PLAN & SEC, Scale 1/8":1'

MILITARY FIG OR OTHER?
 STEEL (CORTEN?) PLATE
 MILITARY FIGURES?



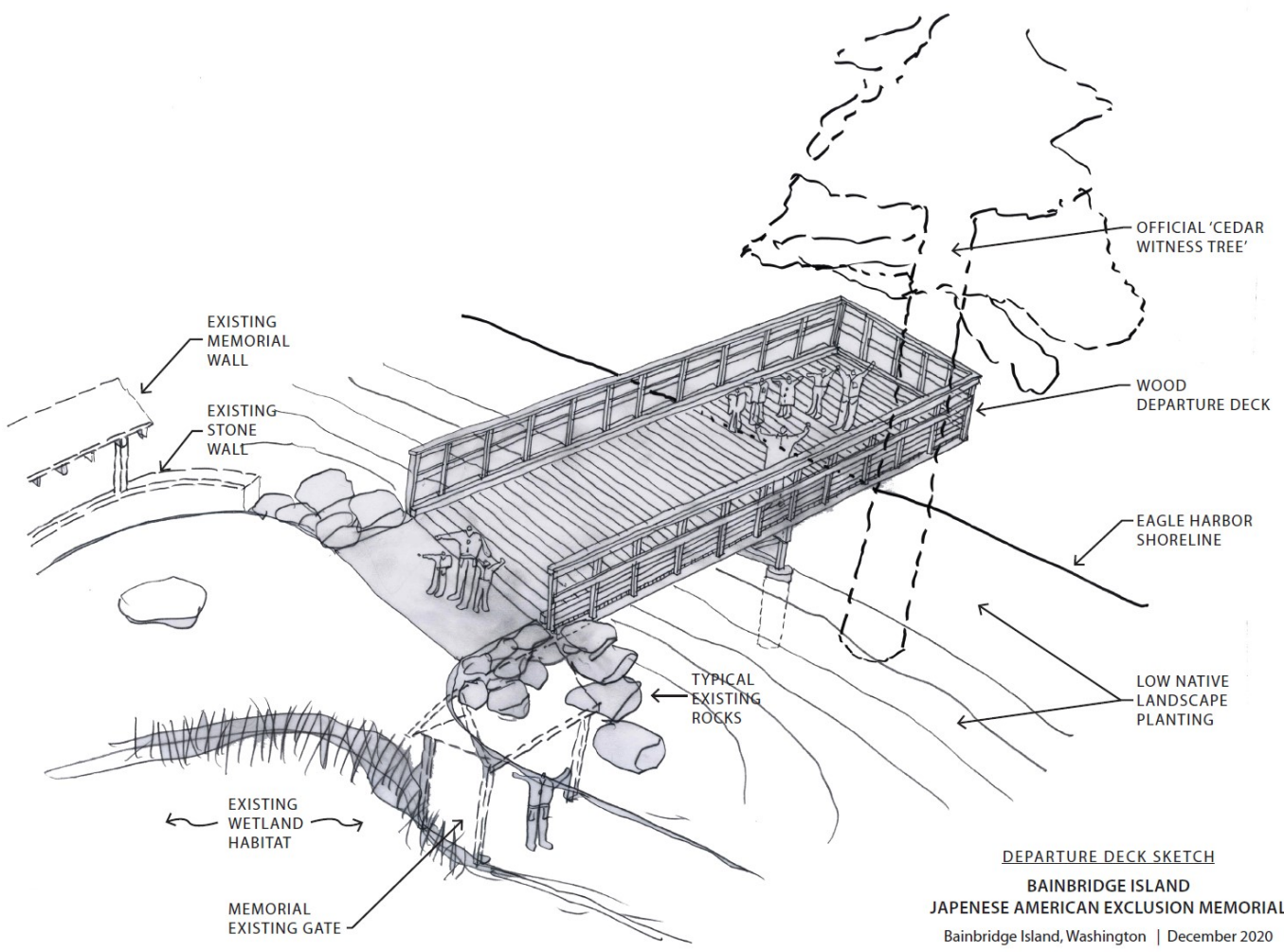
DETAIL Scale 1/2":1'

STEEL (CORTEN?) PLATE
 SOUND SPACE
 CONCRETE SUPPORT AND SLAB

FASTENER W/ ISOLATING PUSHING

Drawings not to scale





DEPARTURE DECK SKETCH
 BAINBRIDGE ISLAND
 JAPANESE AMERICAN EXCLUSION MEMORIAL
 Bainbridge Island, Washington | December 2020

JONES ■ JONES